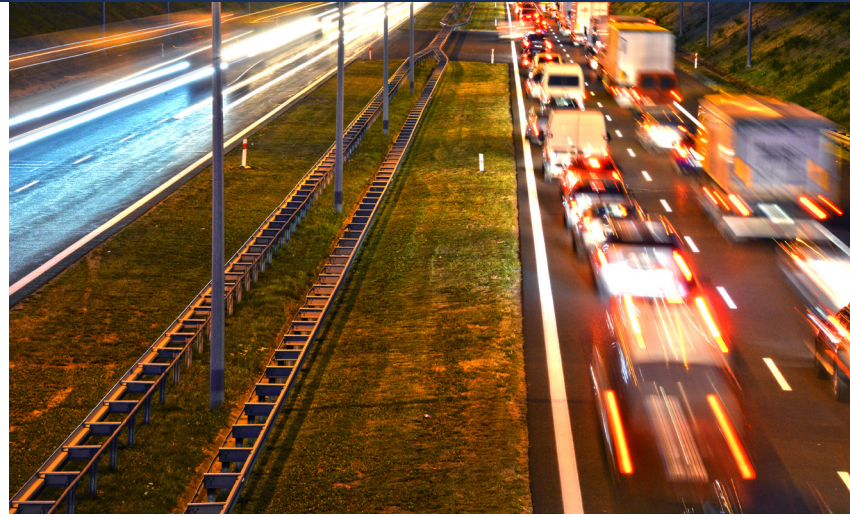


# Auto and Garage

- A XIII, Admitted Carrier
- Admitted Paper
- Direct Bill
- All commercial auto symbols are available
- Prefer fleets of 50 units or less
- Heavy/ Extra Heavy limited to 25% total fleet
- Authority States: AL, AZ, CA, CO, CT, DE, FL, GA, IA, IL, IN, LA, ME, MI, MO, NH, NJ, NV, NY, OH, OR, RI, TX, VT, WA



## SUBMISSION REQUIREMENTS (AUTO)

- Acord 125 & 137 with driver list
- MVRs (if available)
- Loss history

## INELIGIBLE CLASSES (AUTO)

- Truckers
- Sand / Gravel Hauling
- Ambulances

## TARGET (AUTO)

- Contractors (electrical, fencing, GCs, etc.)
- Distributors (auto parts, food / beverage, appliance repair, etc.)

## GARAGE

- ISO garage form and can package to include property and EPLI
- Up to 1/3 limits with excess option available
- Looking for established businesses with at least 1 year of continuous

## SUBMISSION REQUIREMENTS (GARAGE)

- Garage supplemental
- - Employee list (including number of mechanics) & driver list
- MVRs (if available)
- Loss history

## INELIGIBLE CLASSES (GARAGE)

- Dealers
- Emergency roadside assistance
- Automatic car washes
- Motorcycle / ATV service / dealers
- Tire shops for servicing trucks or used tires

## TARGET CLASSES: DELIVERY / SERVICE (GARAGE)

- Valet
- Paint / auto body shops
- Mobile dent repair/detailing
- Full-service car washes
- Lube / Oil services
- Tire shops (no trucks except pickups, no used tire sales)



 BROKERAGE

[wwfi.com](http://wwfi.com)

©2020 Worldwide Facilities, LLC. All rights reserved. CA Lic #0414108